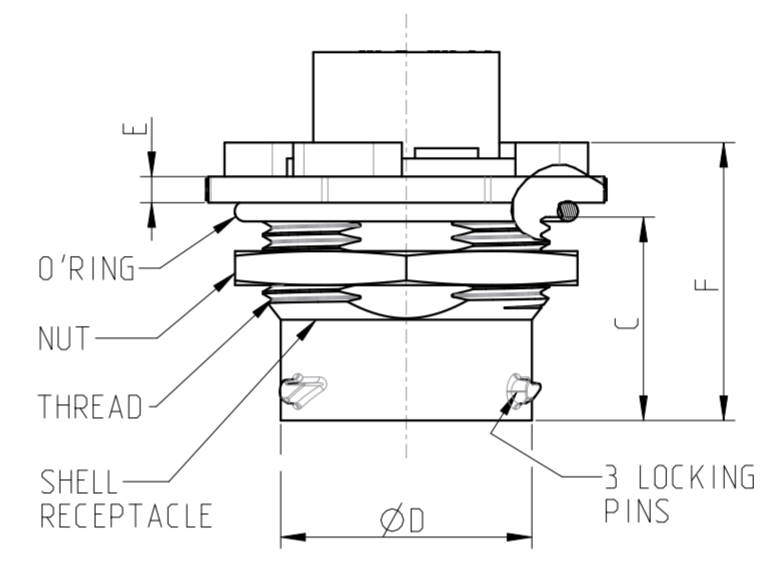
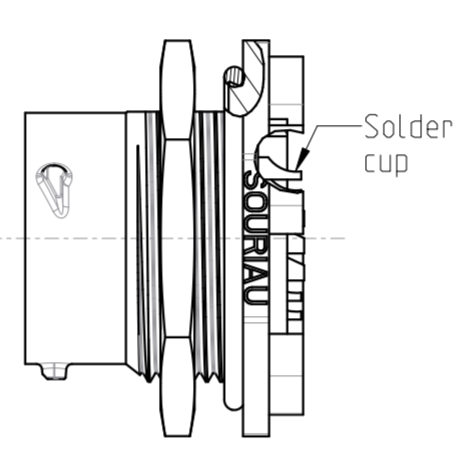
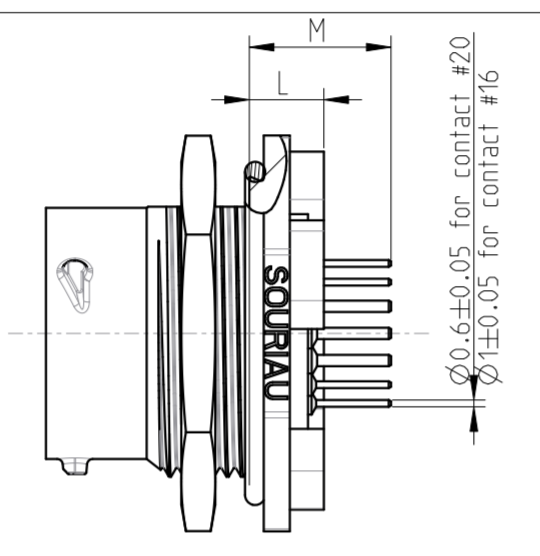
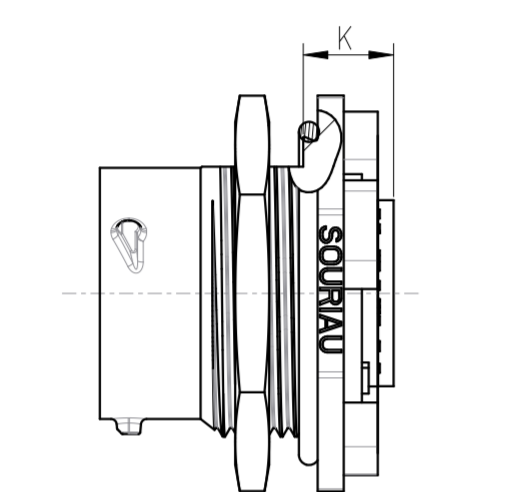
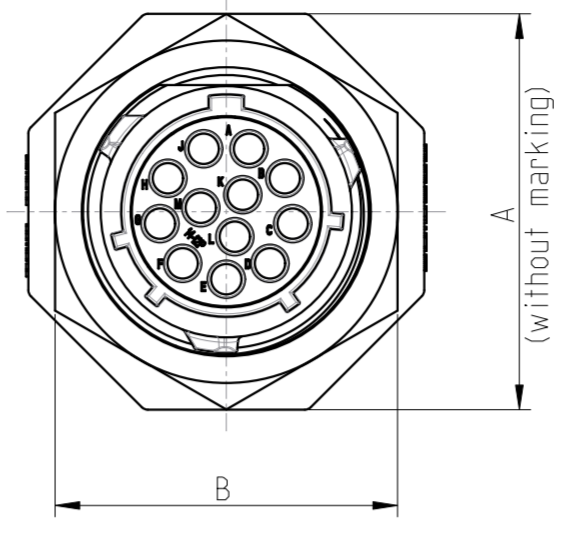
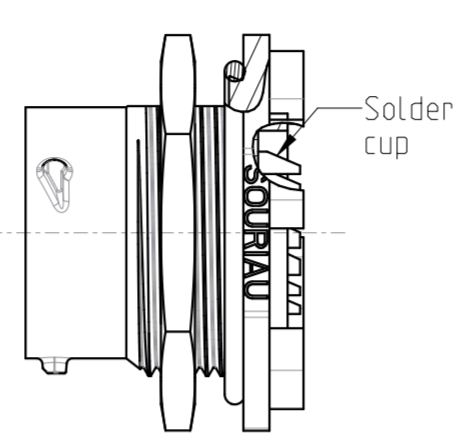
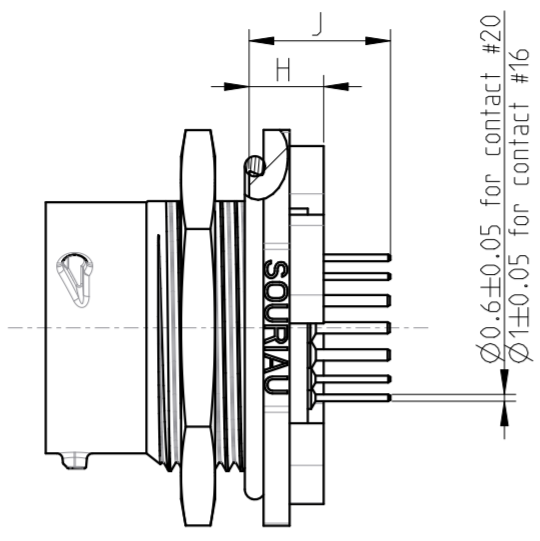
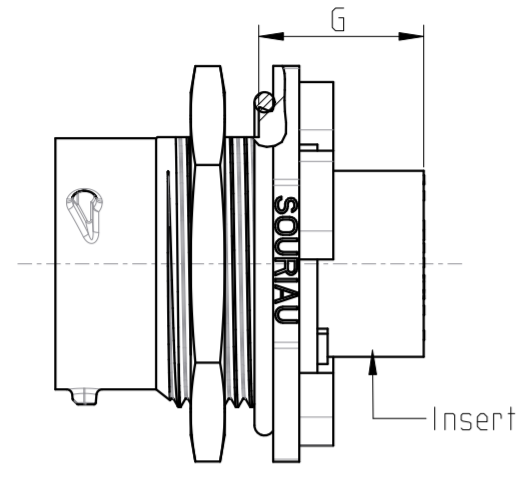


SIDE VIEW FOR EACH VERSION

COMMON QUOTES FOR ALL VERSION

UTSX7----- STANDARD UTSX7--D--- HISeal UTSX7--E--- HISeal



MATERIAL :

- SHELL : PA UL94 V0, UL746C F1 Black color
- INSERT (UTSX7-----) : PA UL94 V0, UL746C F1
- INSERT (UTSX7--D/E---) : Polychloroprene UL94 HB
- NUT : Aluminium alloy + Anodic oxidation
- O'RING : Nitril
- CONTACTS : brass + coated depending on P/N

PERFORMANCE CHARACTERISTICS :

Operating temperature: -40°C up to 105°C
 Insulation resistance: 5000 MΩmin
 Corrosion salt spray: 500 hours
 Durability: 250 matings and unmatings
 Sealing conditions: SEE TABLE

NOTA:

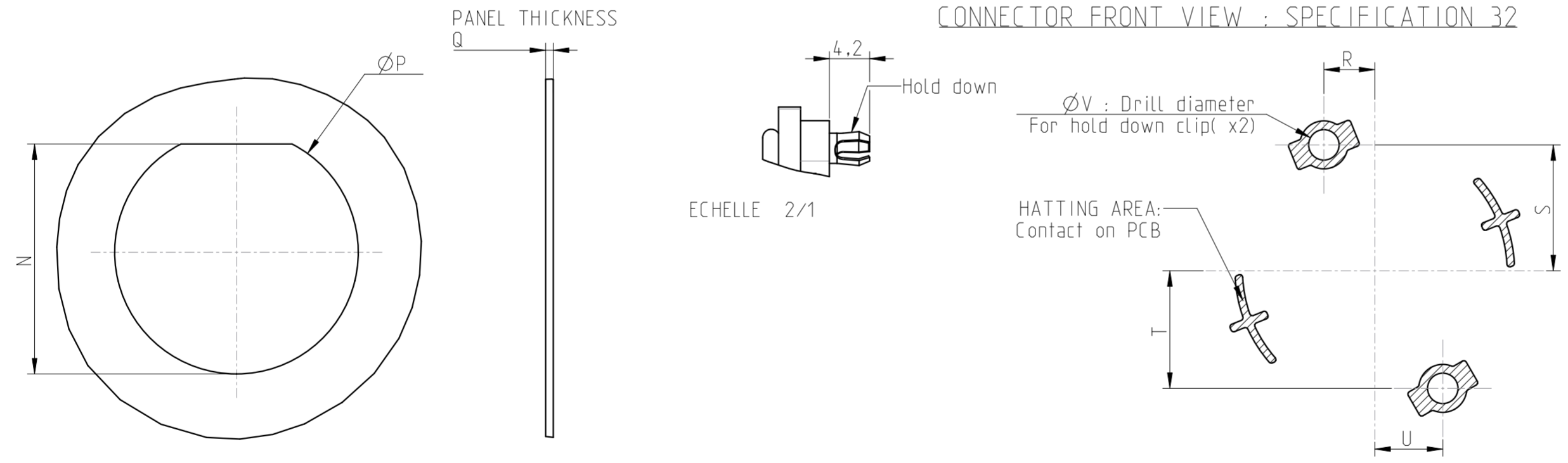
- 1- Contact to be ordered separately for version UTSX7----- : refer to corresponding catalogue.
- 2- Insert arrangement refer to:

UTX_LAYOUT (Standard Version)
 UTX-HS_LAYOUT (HiSeal Version)

SEALING CONDITION

Sealing in MATED conditions with COUNTERPART :	Sealing in MATED conditions with COUNTERPART and UNMATED conditions:	Sealing in MATED conditions with COUNTERPART and UNMATED conditions:
-IP6x : No ingress of dust	-IP6x : No ingress of dust	-IP6x : No ingress of dust
-IPx8 1 bar during 1 week: immersion under 10 m of water.	-IPx8 1 bar during 1 week: immersion under 10 m of water.	-IPx8 1 bar during 1 week: immersion under 10 m of water.
-IPx9K : exposure to high pressure water of cleaning equipment(IEC 60529)	-IPx9K : exposure to high pressure water of cleaning equipment(IEC 60529)	-IPx9K : exposure to high pressure water of cleaning equipment(IEC 60529)

PANEL CUT OUT and DRILLING PATTERN DEFINITION



Country	Jurisdiction & Control List
FR	NOT LISTED

SOURIAU shall not be liable for any non-conformity or damage due to a use of the Products which does not comply with the Specifications issued by either of the Parties or by a third party (professional recommendation, technical notice.)

P/N : CROSS REF TABLE

BASIC SERIES	UTSX 7 14 D 19 P - --	* P/N for example
SHELL TYPE	7 Jam nut receptacle	
SHELL SIZE	10 12 14	SPECIFICATION Ø : Without Hold on 32: With Hold on (see definition in table)
TYPE OF LAYOUT	Standard layout (No digit) D : HISeal Dispolder contacts E : HISeal Handsolder contacts	ORIENTATIONS Normal (no digit) W.X.Y.Z
INSERT ARRANGEMENT	See NOTA 2	TYPE OF CONTACTS P: MALE S: FEMALE

* -1mm FOR LAYOUT 12D14

SHELL SIZE	TYPE	±0.2	±0.2	MAX	±0.2	±0.3	±0.2	MAX	±0.25	MIN / MAX	MAX	±0.25	MIN / MAX	±0.1	±0.15	MIN / MAX	±0.1	±0.1	±0.1	±0.1	±0.1	UNEF CLASS 2A	THREAD
		A	B	C	ØD	E	F	G	H	J	K	L	M	N	ØP	Q	R	S	T	U	ØV		
10	STANDARD / HISeal	27.00	22.15		15.20									16.59	17.63		3.98	9.85	9.20	5.31		11/16-24	
12	STANDARD / HISeal	31.75	27.15		19.15									20.9	22.39		4.92	12.17	11.37	6.56		7/8-20	
14	STANDARD	34.90	30.20	18.1	22.31	2.2	24.5	18.2	6.57	11.5/13.4*	14.5	6.57	11.5/13.4*	24.04	25.56	2/3.2	5.29	13.10	13.10	5.29	3.1	1"20	
	HISeal																		12.23	7.06			
16	STANDARD / HISeal	38.1	33.3		25.56									27.57	28.74		5.87	14.53	13.57	7.84		1"1/8-18	
18	STANDARD / HISeal	41.28	36.52		28.74									30.55	31.91		6.43	15.92	14.87	8.59		1"1/4-18	

D	07/12/2023	- Modification of the dimensions T & U for size 14 standard	25782H
ISS	DATE	Latest modification - by: Q.LECOMTE	MOD N°
Designed by: J.GAMBIER		Date: 17/07/2020	CUSTOMER DRAWING
TITLE		JAM NUT RECEPTACLE - SIZE 10 to 18 - Standard and HiSeal version	
CONNECTEUR UTSX			
Scale	3/2	Dimensions in mm General Linear Tolerances: ±0.2	NPRDS / PROJECT GGB
FORMAT		SOURIAU DRG N° UTSX-0002A-C	
A2		SHEET 1 / 1	



www.souriau.com

This document is the property of SOURIAU. It must not be reproduced or communicated without permission.